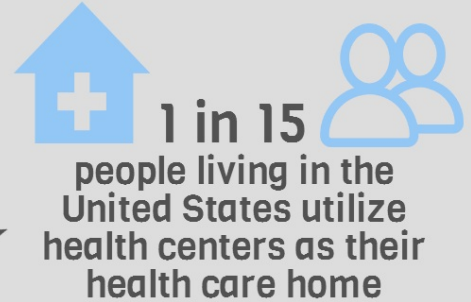
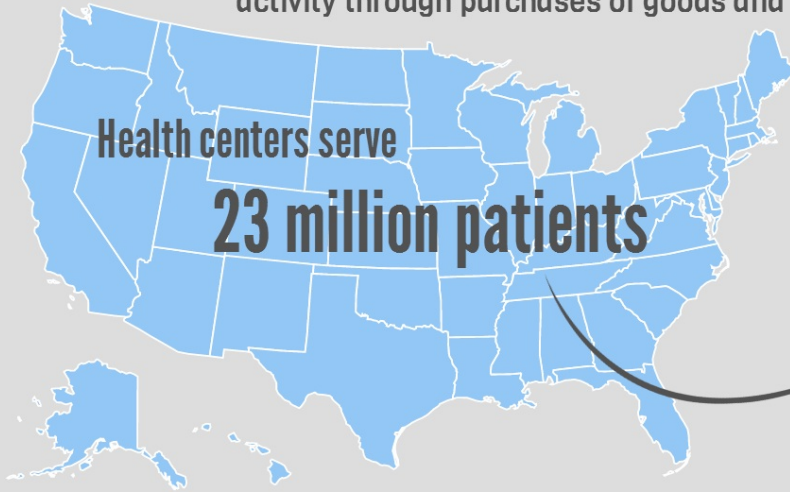




National Economic and Community Impact of the Health Center Program

Community Impact

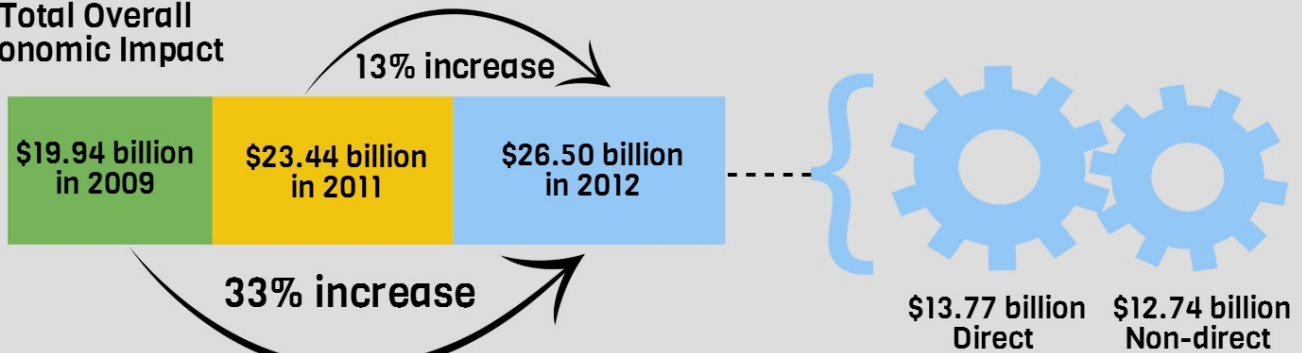
For 50 years, America's Health Centers have provided high-quality primary care in more than 9,000 underserved communities across the U.S. Health centers not only address the health and well-being of their patients but also of their entire communities. Health centers act as local engines for healthier communities by producing an economic "ripple effect" that creates jobs and fuels additional economic activity through purchases of goods and services.



Economic Impact

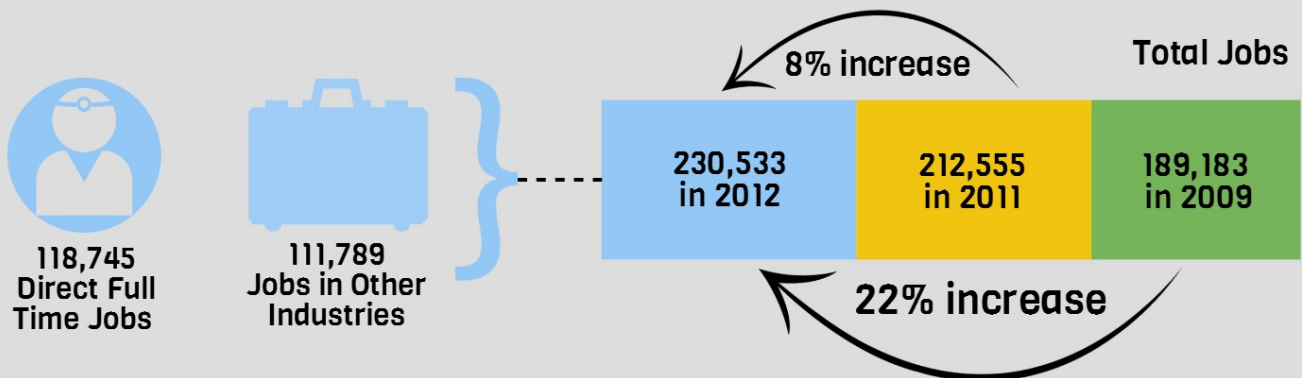
Investing in health centers has led to an increase in the economic impact generated, bringing economic benefits to resource-poor communities. In 2012, health centers generated more than **\$26.5 billion** in economic activity for their local communities, a 33% increase since 2009.

Total Overall Economic Impact



Impact on Jobs

The number of jobs health centers have produced in some of the nation's most economically challenged areas has also increased. In 2012, health centers generated over **230,000 jobs**, a 22% increase since 2009.



With continued investment, health centers will remain local engines for healthier communities, improving health while generating significant local, state, and national economic returns.

