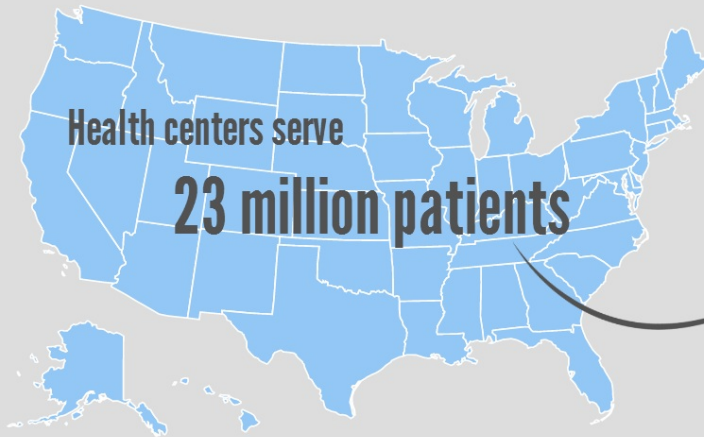



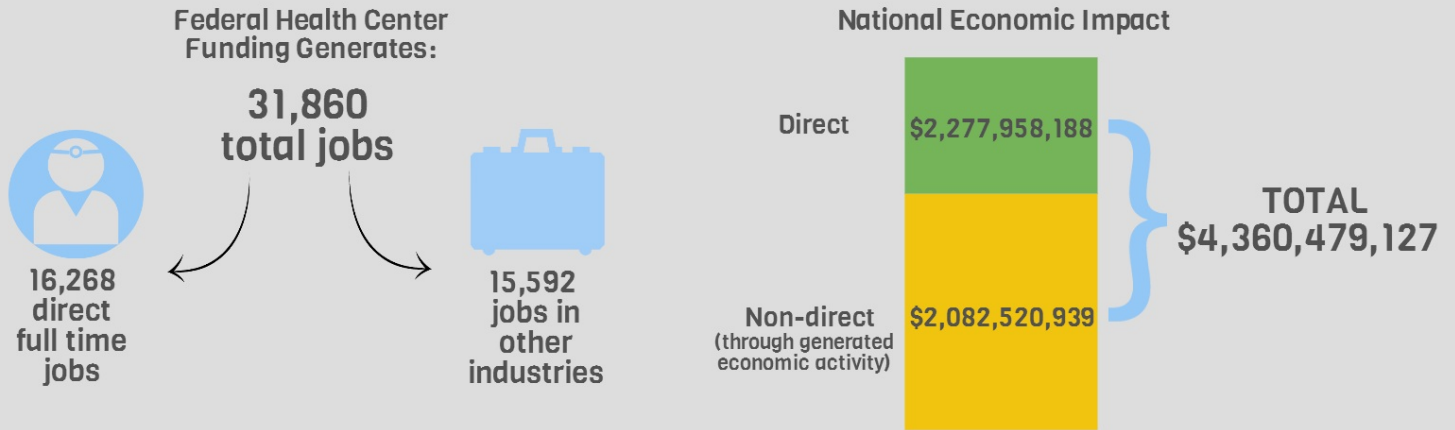
# National Economic and Community Impact of Federal Health Center Funding

**Community Impact** For 50 years, America's Health Centers have provided high-quality primary care in more than 9,000 underserved communities across the U.S.

**1 in 15**  
people living in the United States utilize health centers as their health care home

**Economic Impact** Federal funding is only one portion of health centers' overall revenues, but it produces an economic "ripple effect," creating jobs and fueling additional economic activity through purchases of goods and services.



**Impact of the Primary Care Funding Cliff** Without action by Congress, the Health Center Fund is set to expire after FY2015, leaving health centers across the nation to face up to a 70% cut to their operational grants, resulting in staff layoffs, site closures, and loss of access to care.

